



## Latest News

October 31, 2008:

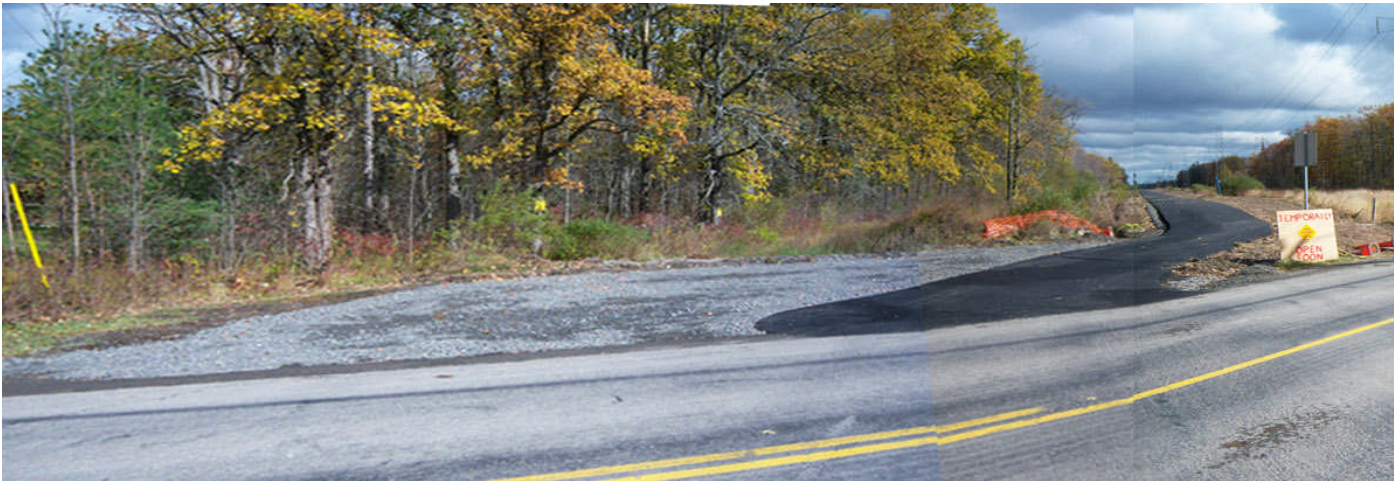
### **The Rails-to-Trails is now OPEN!**

The town now has 3.3 miles of paved pathway for bicycle and pedestrian use from Meyer Road to Lockport Road.

Some additional trailhead work will be undertaken in the spring, but in the meantime ENJOY!



Lockport Road



Mapleton Road